

**BUILDING IS CURRENTLY UNDER RENOVATION!**



**FOR LEASE**

## 360 Harmon Ave.

**360 HARMON AVE.  
LEBANON, OH 45036**

### Available Space

±40,087 SF

### Office Space

±4,000 SF

### Lease Rate

\$6.95

### Operating Expenses

\$1.41/SF

### Available

Immediately

### Property Highlights

- 19'-26' Clear height
- 4 Docks with pit levelers and 3 Drive-ins
- Outside storage capabilities (1-2 acres)
- ±4.5 Miles from I-71 and ±6.7 miles from I-75

### Interior and Exterior Building Improvements

- Fully renovated office space, restrooms and breakroom
- LED lights throughout
- Interior and exterior paint
- Polished concrete floors
- New HVAC and warehouse heaters as needed
- New dock and drive-in doors and equipment as needed
- New landscaping

*For information, please contact:*

**Si Pitstick, SIOR, CCIM**  
Executive Managing Director  
t 513-508-5014  
si.pitstick@nmrk.com

**Josh Young, SIOR**  
Senior Managing Director  
t 513-509-0404  
josh.young@nmrk.com

**Drew Wall**  
Director of Leasing  
t 513-335-1728  
drew@mw1corp.com

312 Walnut Street, Suite 1510  
Cincinnati, OH 45202



[nmrk.com](http://nmrk.com)

**NEWMARK**



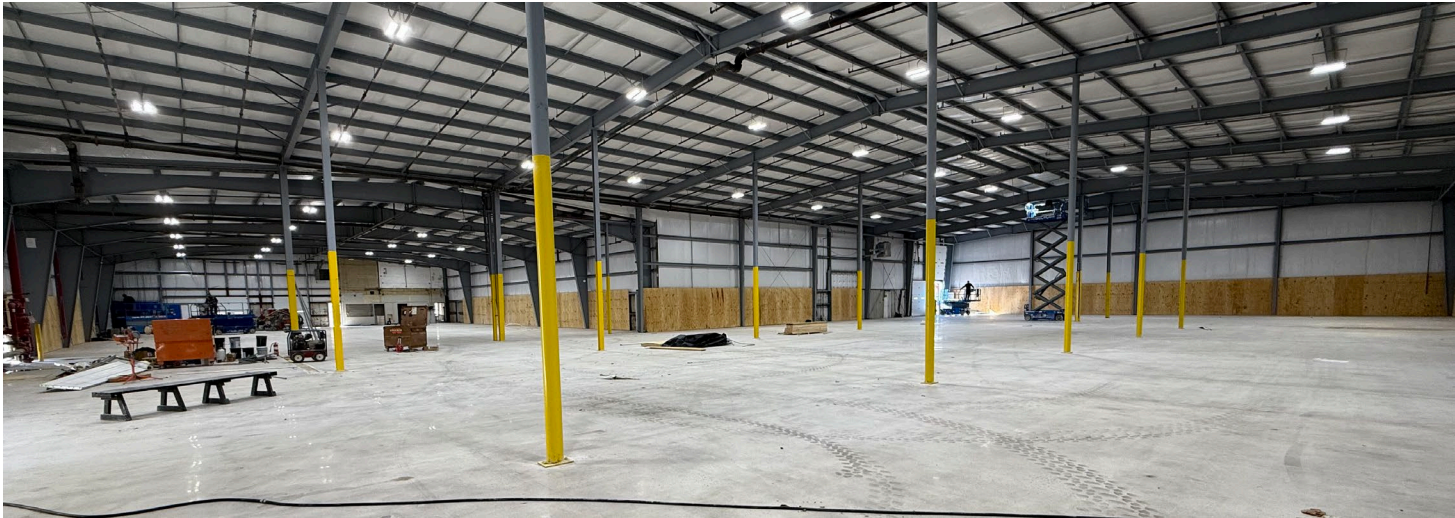
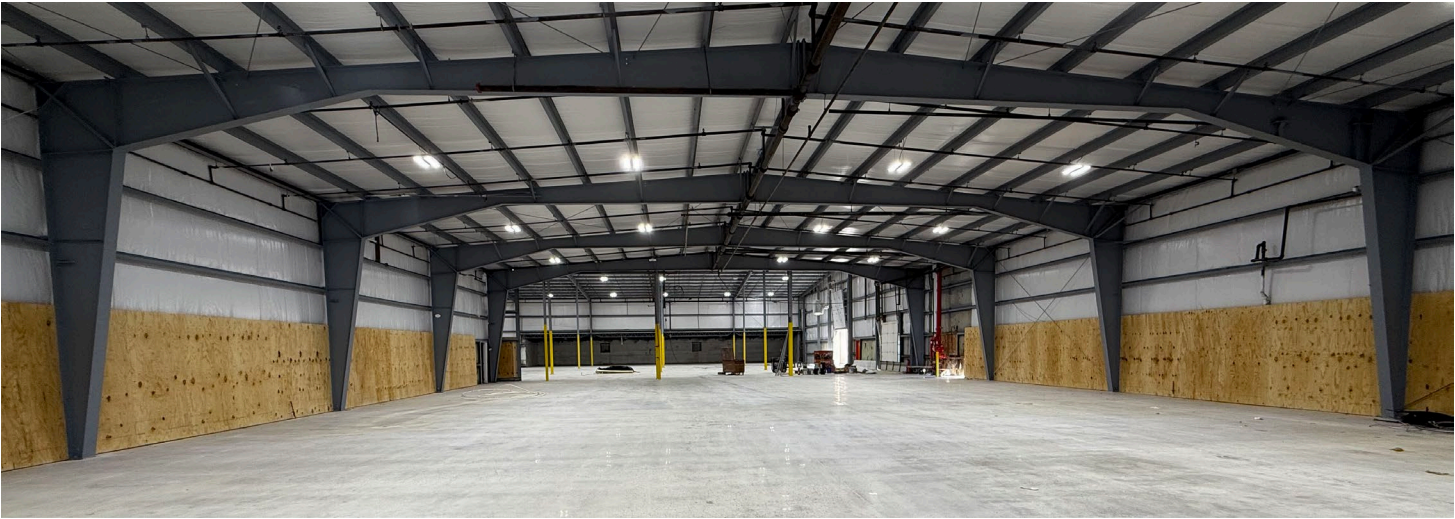
The information contained herein has been obtained from sources deemed reliable but has not been verified and no guarantee, warranty or representation, either express or implied, is made with respect to such information. Terms of sale or lease and availability are subject to change or withdrawal without notice.

## BUILDING SPECIFICATIONS

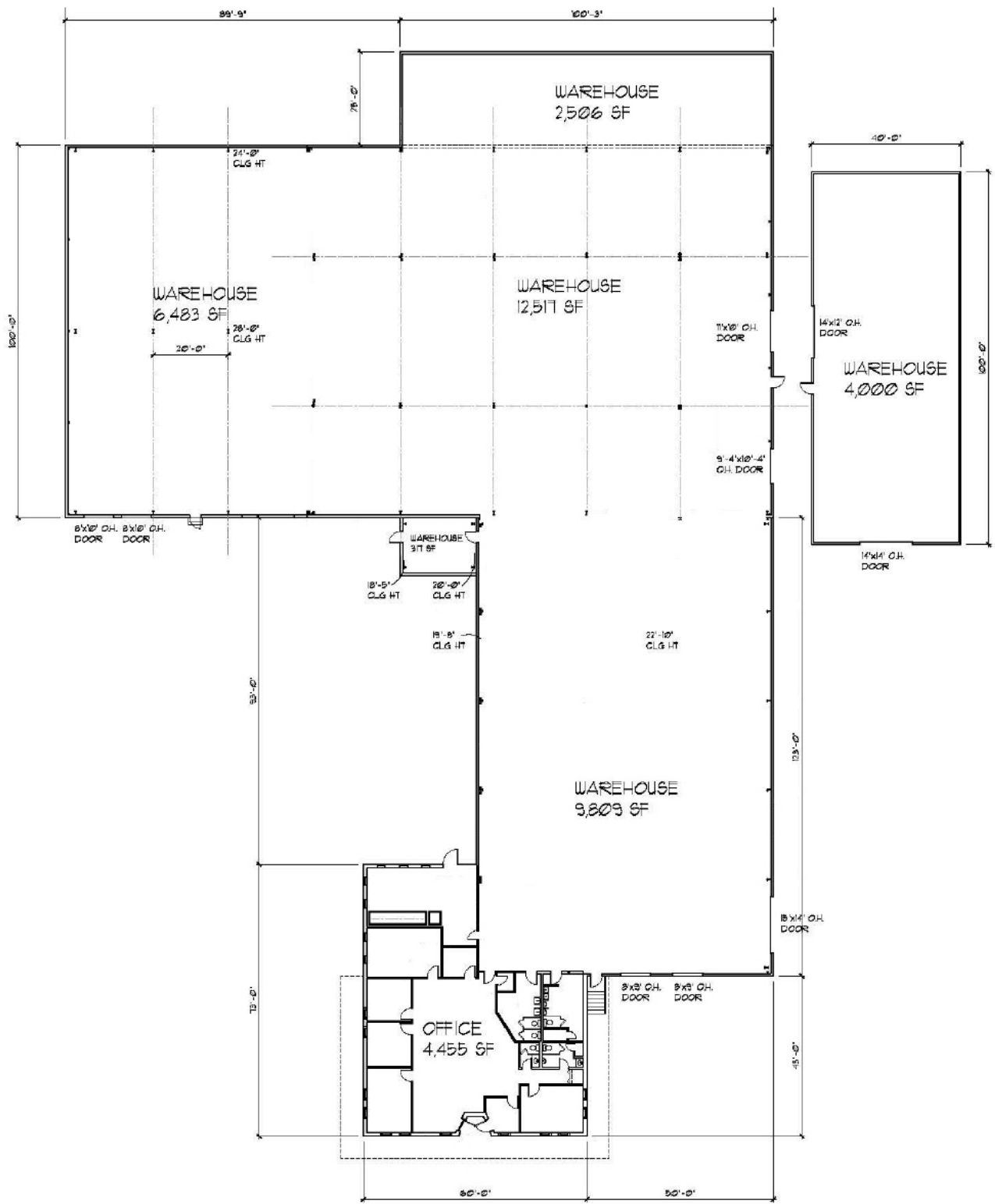
<b>Location</b>	Lebanon, OH Warren County	<b>Drive-in</b>	3
<b>Available Space</b>	±40,087 SF	<b>Parking</b>	±30 Spaces (Expandable)
<b>Office Size</b>	±4,000 SF	<b>Restrooms</b>	2 Sets; 1 in plant and 1 in office
<b>Warehouse Size</b>	±36,087 SF	<b>Sprinkler</b>	Wet
<b>Total Building Size</b>	±40,087 SF	<b>Air Conditioning Warehouse</b>	Yes; in office Gas-fired unit heaters
<b>Land</b>	- Main Building ±3 Acres - Additional land ±1.38 Acres	<b>Lighting</b>	LED
<b>Zoning</b>	I-2 Heavy Industrial	<b>Electrical Service</b>	City of Lebanon 185 amps, 480 volt, 3 phase
<b>Year Built</b> <b>Year Renovated</b>	1972 2025	<b>Gas</b>	Duke Energy
<b>Construction</b>	Metal	<b>Sewer</b>	City of Lebanon
<b>Building Dimensions</b>	N/A	<b>Water</b>	City of Lebanon
<b>Column Spacing</b>	- Clear span portion - 22'x48' warehouse	<b>Floor Drains</b>	Yes
<b>Floor Thickness</b>	5" reinforced concrete	<b>Available</b>	Immediately
<b>Roof Type</b>	Recoated stain metal roof	<b>Lease Rate</b>	\$6.95/SF
<b>Clear Height</b>	19'-26'	<b>Operating Expenses</b>	\$1.41/SF
<b>Docks</b>	4 Docks with pit levelers		



PROPERTY PHOTOS

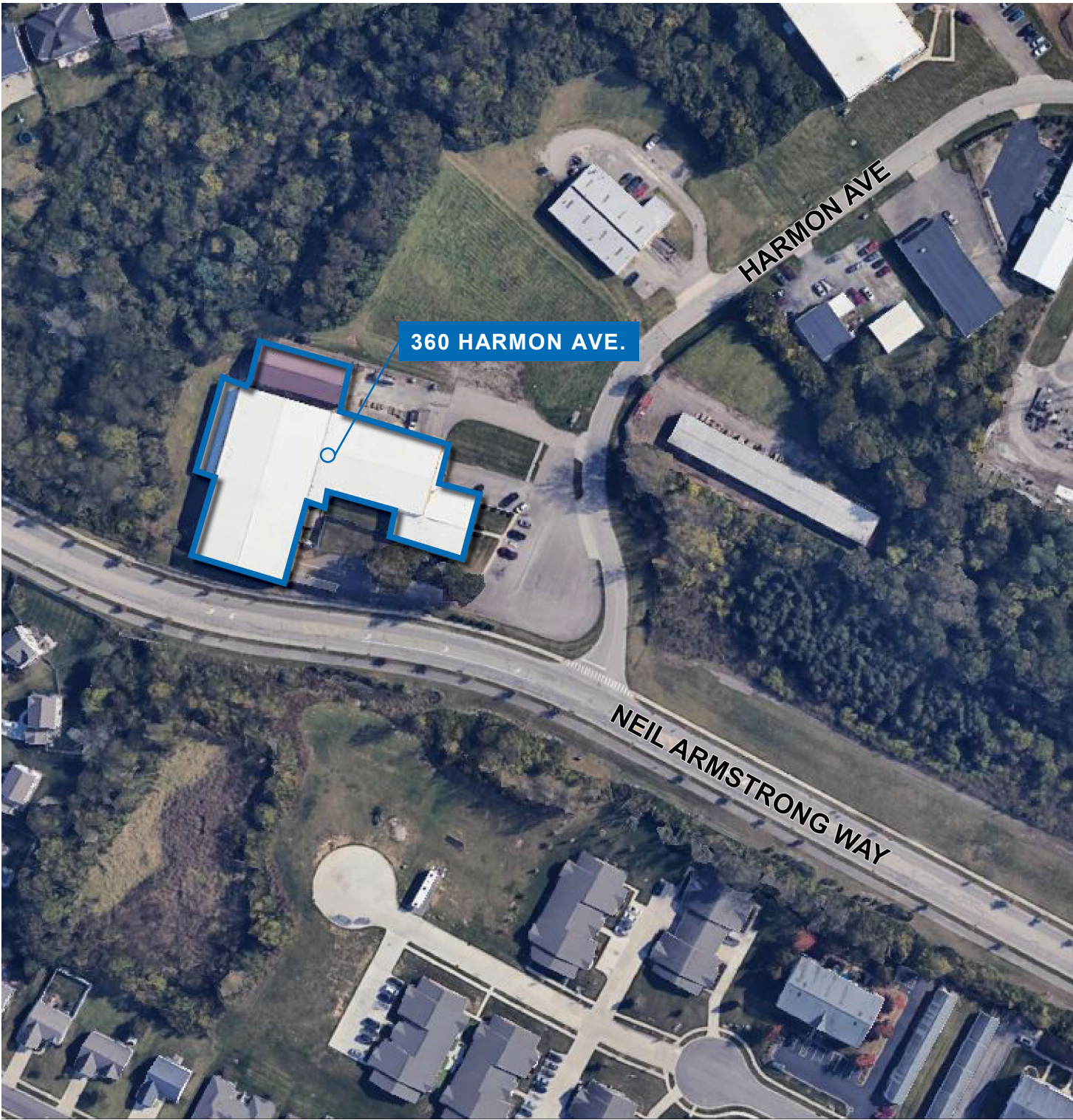


FLOOR PLAN



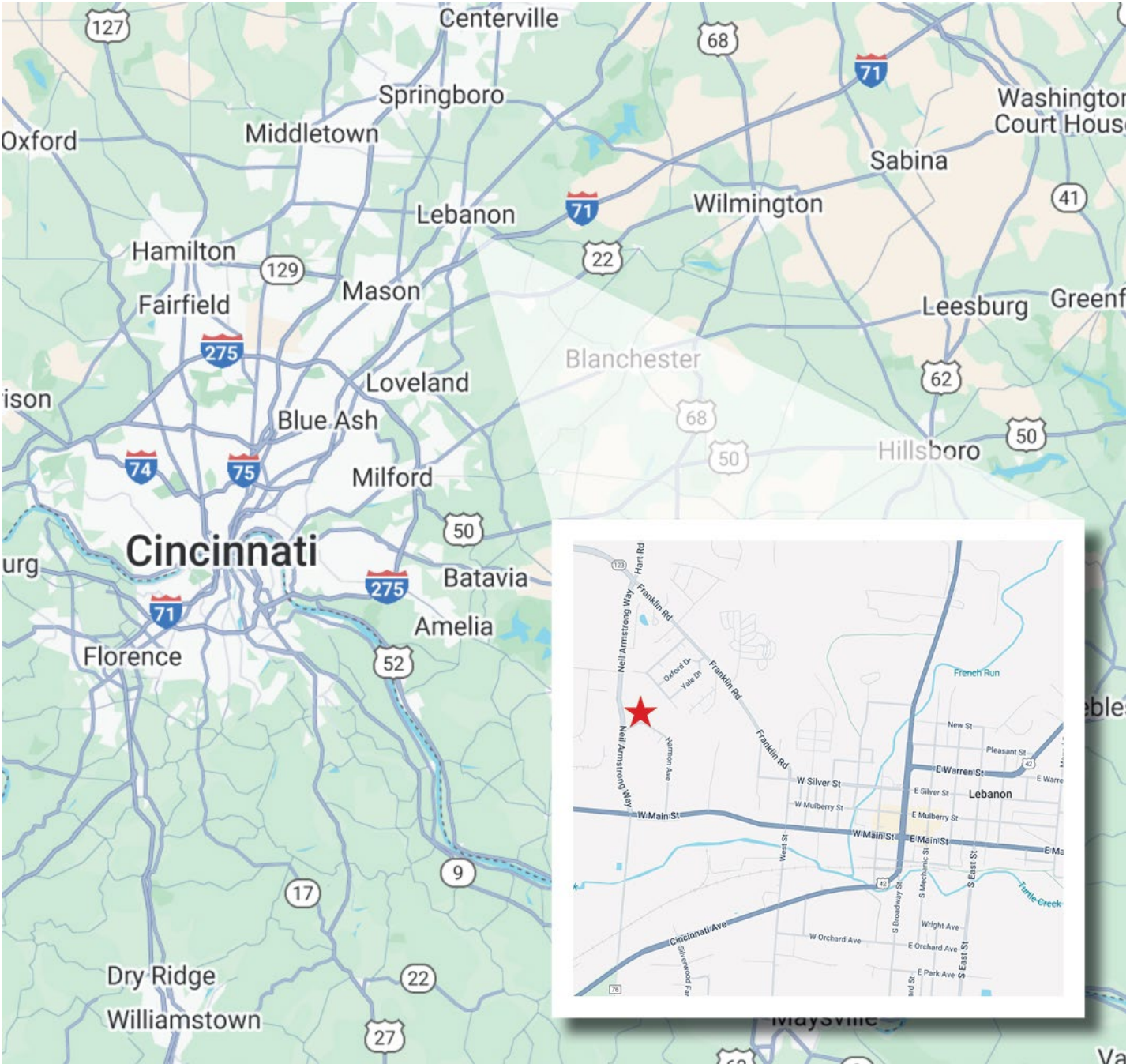


AERIAL MAP





LOCATOR MAP



For information, please contact:

**Si Pitstick, SIOR, CCIM**  
Executive Managing Director  
t 513-508-5014  
si.pitstick@nmrk.com

**Josh Young, SIOR**  
Senior Managing Director  
t 513-509-0404  
josh.young@nmrk.com

**Drew Wall**  
Director of Leasing  
t 513-335-1728  
drew@mw1corp.com

312 Walnut Street, Suite 1510  
Cincinnati, OH 45202



The information contained herein has been obtained from sources deemed reliable but has not been verified and no guarantee, warranty or representation, either express or implied, is made with respect to such information. Terms of sale or lease and availability are subject to change or withdrawal without notice.