



## 680 PRECISION CT. MIAMISBURG, OH 45342

AVAILABLE FOR LEASE



[CLICK HERE FOR AERIAL VIDEO](#)

### PROPERTY HIGHLIGHTS



**73,815 Total SqFt**

- Former Mfg. Facility located in Miamisburg minutes to I-75
- Heavy power 480-volt, 3-phase, 2,000 amps and bus duct throughout
- Five (5) docks and Two (2) drive-in doors
- +/- 75 parking spaces
- New ownership and renovations underway
- Lease Rate: \$6.95/SqFt NNN
- Available for immediate occupancy

[INFO@SQFTCOMMERCIAL.COM](mailto:INFO@SQFTCOMMERCIAL.COM) | (513) 843-1600 | [SQFTCOMMERCIAL.COM](http://SQFTCOMMERCIAL.COM)

**Rod MacEachen**  
(513) 675-5764 | [Rod@SqFtCommercial.com](mailto:Rod@SqFtCommercial.com)

**Roddy MacEachen, SIOR**  
(513) 739-3985 | [Roddy@SqFtCommercial.com](mailto:Roddy@SqFtCommercial.com)

**Jared Wagoner, SIOR**  
(812) 890-1768 | [Jared@SqFtCommercial.com](mailto:Jared@SqFtCommercial.com)

**Amy Castaneda**  
(503) 310-9768 | [Amy@SqFtCommercial.com](mailto:Amy@SqFtCommercial.com)

**Sarah Kern**  
(513) 426-4864 | [Sarah@SqFtCommercial.com](mailto:Sarah@SqFtCommercial.com)



# 680 PRECISION CT.

M I A M I S B U R G , O H

## PROPERTY DETAILS

Total SqFt:	73,815
Warehouse SqFt:	64,896
Office SqFt:	8,919
Acreage:	5.2 acres
Clear Height:	19'-20'
Year Built:	1992
Type Construction:	CMU, Masonry, and Steel
Lighting:	LED's
Column Spacing:	40'x50' and varies
Dock door:	Five (5) 8'6" x 9" with motorized openers - (3) with mechanical pit levelers

Drive-in door:	Two (2) - 12'x14 with motorized openers
Sprinkler:	Wet system
Electrical Service:	480-volt, 3-phase, 2,000 amps
Heat:	Natural gas-fired unit heaters
Roof:	Ballast
Truck court:	120' heavy duty asphalt
Parking Lot:	Approximately 75 spaces
Restrooms:	Two (2) sets; One (1) in office and One (1) in warehouse
Annual Property Taxes:	\$71,208 (\$0.96/SqFt)
Montgomery County Parcel ID's:	K46 01521 0003

## PARCEL OUTLINE



[INFO@SQFTCOMMERCIAL.COM](mailto:INFO@SQFTCOMMERCIAL.COM) | (513) 843-1600 | [SQFTCOMMERCIAL.COM](https://SQFTCOMMERCIAL.COM)



**Rod MacEachen**  
(513) 675-5764 | [Rod@SqFtCommercial.com](mailto:Rod@SqFtCommercial.com)

**Amy Castaneda**  
(503) 310-9768 | [Amy@SqFtCommercial.com](mailto:Amy@SqFtCommercial.com)

**Roddy MacEachen, SIOR**  
(513) 739-3985 | [Roddy@SqFtCommercial.com](mailto:Roddy@SqFtCommercial.com)

**Sarah Kern**  
(513) 426-4864 | [Sarah@SqFtCommercial.com](mailto:Sarah@SqFtCommercial.com)

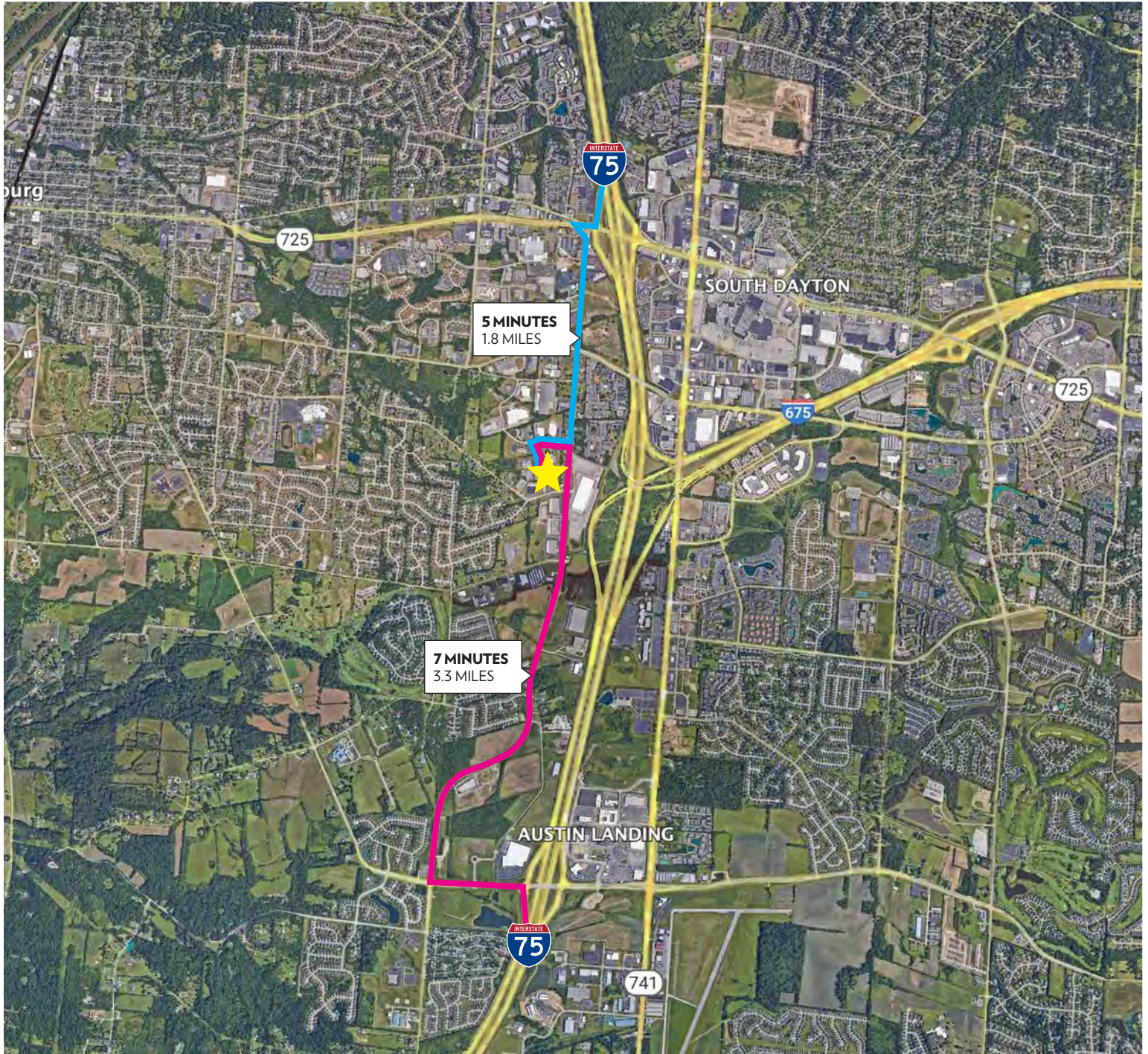
**Jared Wagoner, SIOR**  
(812) 890-1768 | [Jared@SqFtCommercial.com](mailto:Jared@SqFtCommercial.com)



# 680 PRECISION CT.

MIAMISBURG, OH

## DISTANCE MAP



[INFO@SQFTCOMMERCIAL.COM](mailto:INFO@SQFTCOMMERCIAL.COM) | (513) 843-1600 | [SQFTCOMMERCIAL.COM](http://SQFTCOMMERCIAL.COM)



**Rod MacEachen**  
(513) 675-5764 | [Rod@SqFtCommercial.com](mailto:Rod@SqFtCommercial.com)

**Amy Castaneda**  
(503) 310-9768 | [Amy@SqFtCommercial.com](mailto:Amy@SqFtCommercial.com)

**Roddy MacEachen, SIOR**  
(513) 739-3985 | [Roddy@SqFtCommercial.com](mailto:Roddy@SqFtCommercial.com)

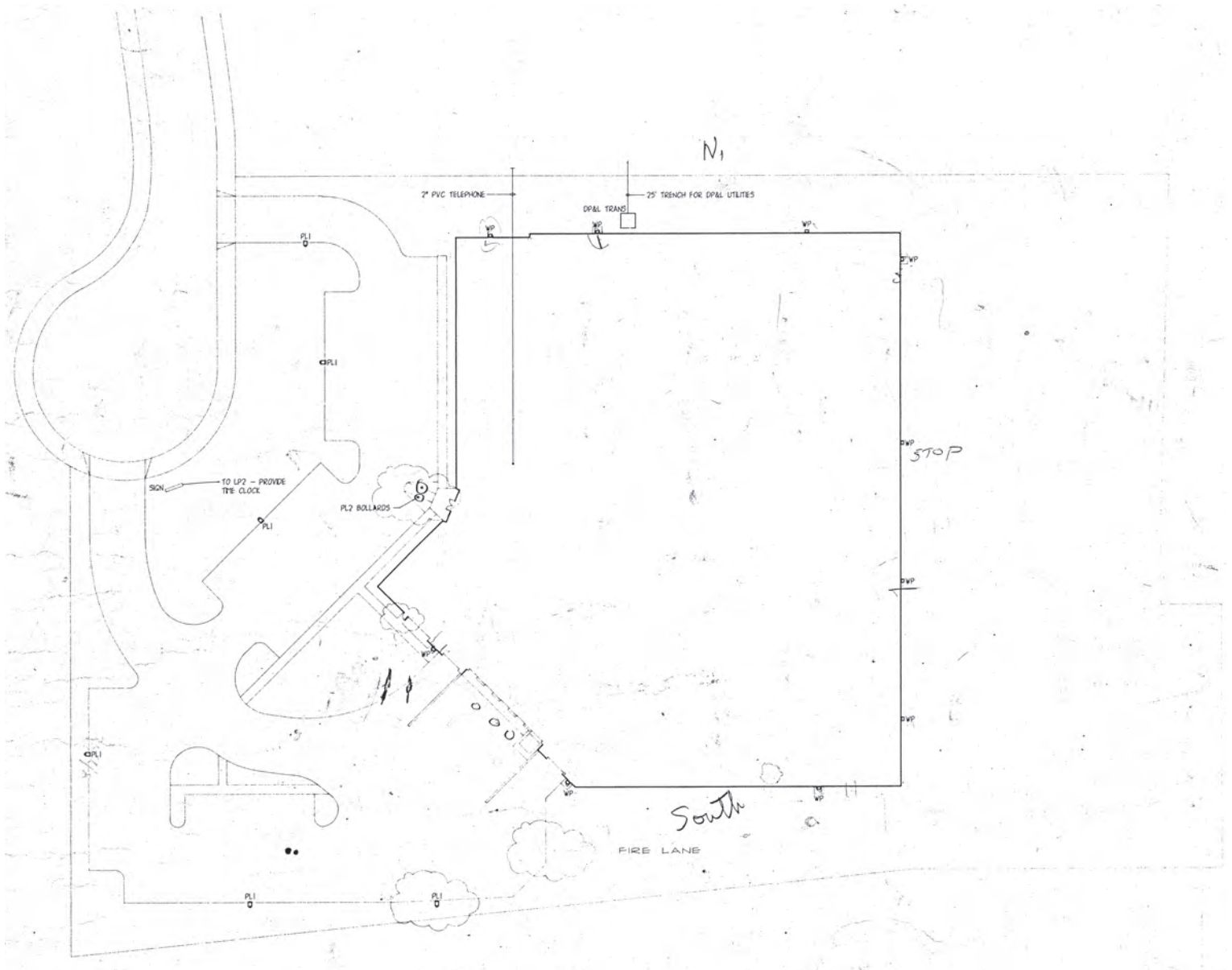
**Sarah Kern**  
(513) 426-4864 | [Sarah@SqFtCommercial.com](mailto:Sarah@SqFtCommercial.com)

**Jared Wagoner, SIOR**  
(812) 890-1768 | [Jared@SqFtCommercial.com](mailto:Jared@SqFtCommercial.com)



# 680 PRECISION CT. MIAMISBURG, OH

## SITE PLAN



INFO@SQFTCOMMERCIAL.COM | (513) 843-1600 | [SQFTCOMMERCIAL.COM](https://www.sqftcommercial.com)



**Rod MacEachen**  
(513) 675-5764 | [Rod@SqFtCommercial.com](mailto:Rod@SqFtCommercial.com)

**Amy Castaneda**  
(503) 310-9768 | [Amy@SqFtCommercial.com](mailto:Amy@SqFtCommercial.com)

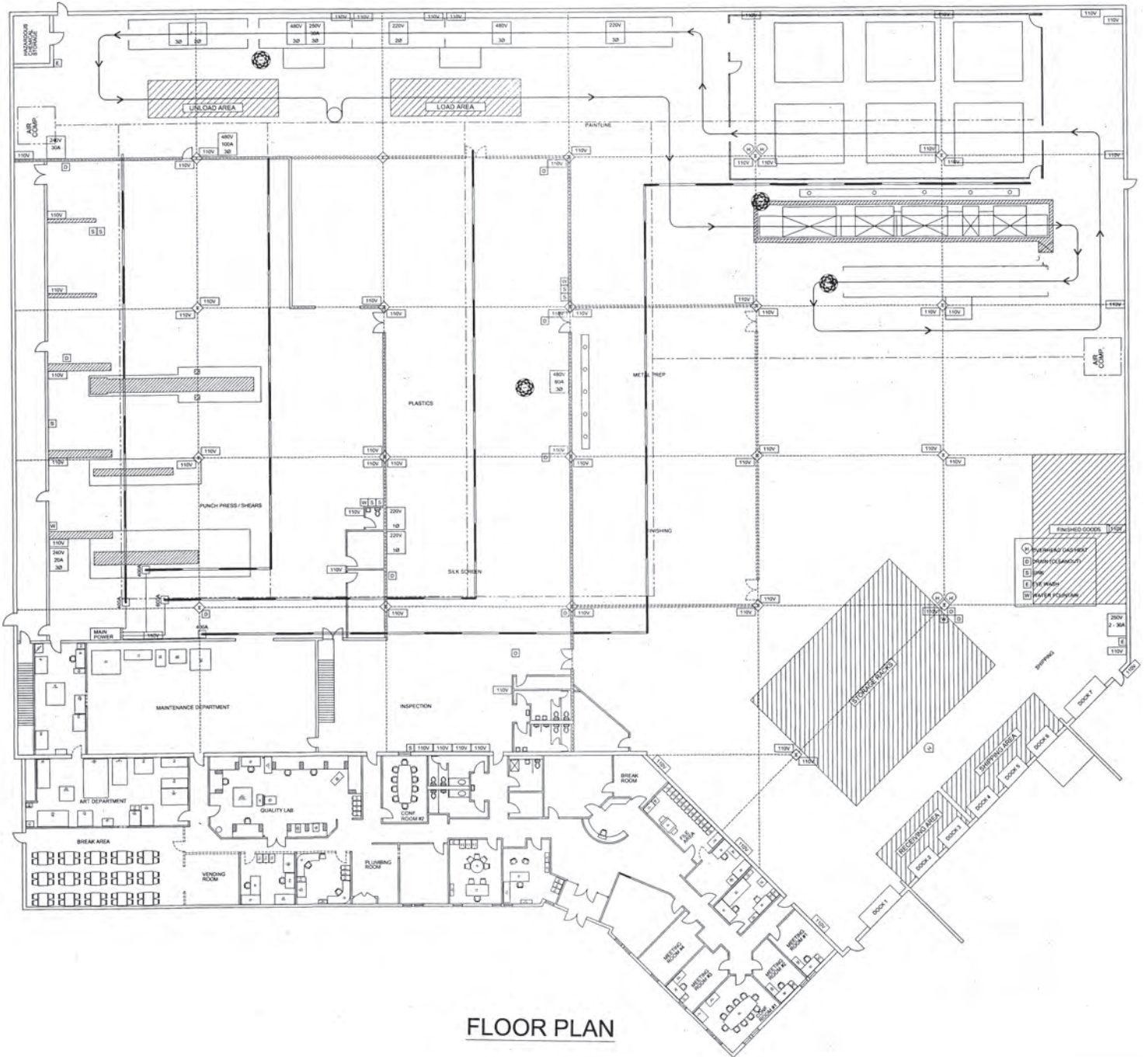
**Roddy MacEachen, SIOR**  
(513) 739-3985 | [Roddy@SqFtCommercial.com](mailto:Roddy@SqFtCommercial.com)

**Sarah Kern**  
(513) 426-4864 | [Sarah@SqFtCommercial.com](mailto:Sarah@SqFtCommercial.com)

**Jared Wagoner, SIOR**  
(812) 890-1768 | [Jared@SqFtCommercial.com](mailto:Jared@SqFtCommercial.com)

# 680 PRECISION CT. MIAMISBURG, OH

## FLOOR PLAN



### FLOOR PLAN

THIS PLAN IS SCHEMATIC, USE LARGER SCALE DRAWINGS FOR THIS PROJECT

INFO@SQFTCOMMERCIAL.COM | (513) 843-1600 | SQFTCOMMERCIAL.COM

**Rod MacEachen**  
(513) 675-5764 | Rod@SqFtCommercial.com

**Roddy MacEachen, SIOR**  
(513) 739-3985 | Roddy@SqFtCommercial.com

**Jared Wagoner, SIOR**  
(812) 890-1768 | Jared@SqFtCommercial.com

**Amy Castaneda**  
(503) 310-9768 | Amy@SqFtCommercial.com

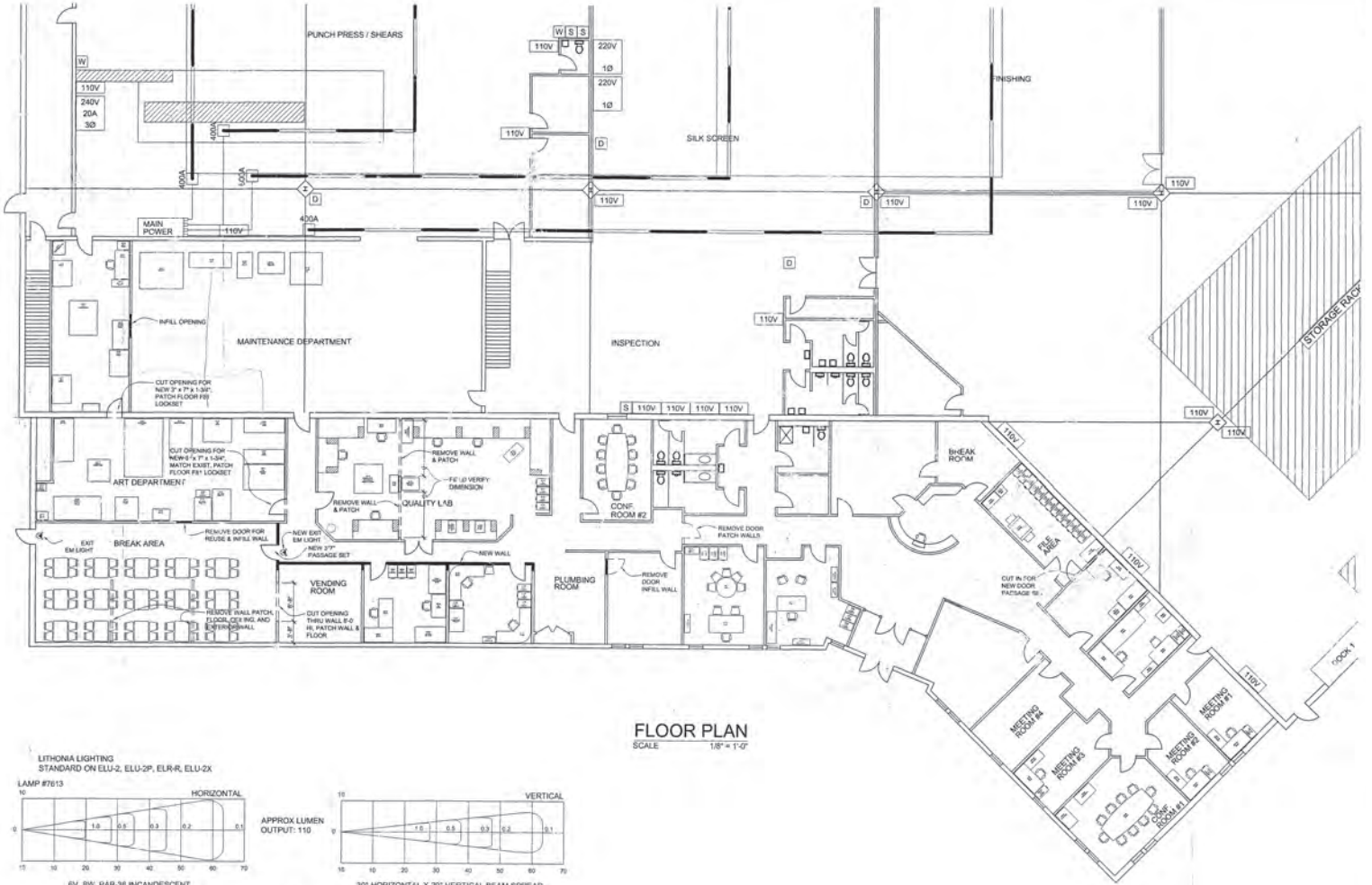
**Sarah Kern**  
(513) 426-4864 | Sarah@SqFtCommercial.com



# 680 PRECISION CT.

MIAMISBURG, OH

## FLOOR PLAN



INFO@SQFTCOMMERCIAL.COM | (513) 843-1600 | SQFTCOMMERCIAL.COM



**Rod MacEachen**  
(513) 675-5764 | Rod@SqFtCommercial.com

**Roddy MacEachen, SIOR**  
(513) 739-3985 | Roddy@SqFtCommercial.com

**Jared Wagoner, SIOR**  
(812) 890-1768 | Jared@SqFtCommercial.com

**Amy Castaneda**  
(503) 310-9768 | Amy@SqFtCommercial.com

**Sarah Kern**  
(513) 426-4864 | Sarah@SqFtCommercial.com



# 680 PRECISION CT. MIAMISBURG, OH

## PROPERTY PHOTOS



[INFO@SQFTCOMMERCIAL.COM](mailto:INFO@SQFTCOMMERCIAL.COM) | (513) 843-1600 | [SQFTCOMMERCIAL.COM](http://SQFTCOMMERCIAL.COM)



**Rod MacEachen**  
(513) 675-5764 | [Rod@SqFtCommercial.com](mailto:Rod@SqFtCommercial.com)

**Amy Castaneda**  
(503) 310-9768 | [Amy@SqFtCommercial.com](mailto:Amy@SqFtCommercial.com)

**Roddy MacEachen, SIOR**  
(513) 739-3985 | [Roddy@SqFtCommercial.com](mailto:Roddy@SqFtCommercial.com)

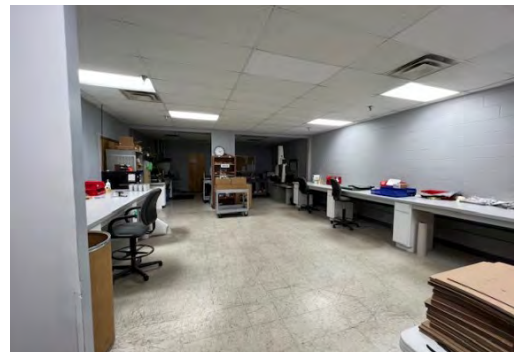
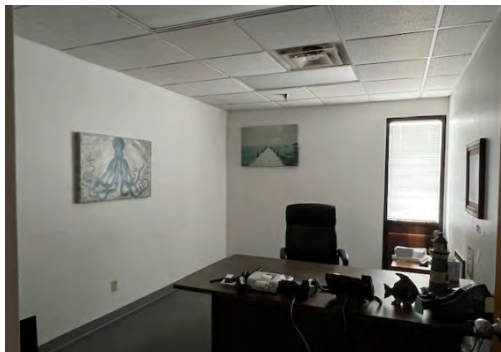
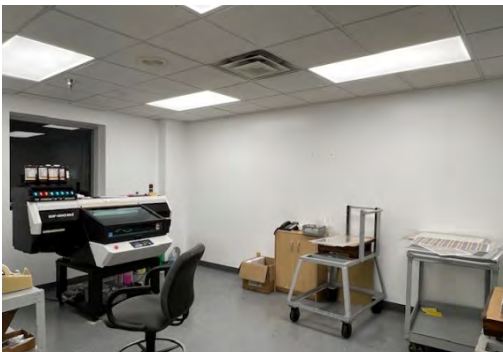
**Sarah Kern**  
(513) 426-4864 | [Sarah@SqFtCommercial.com](mailto:Sarah@SqFtCommercial.com)

**Jared Wagoner, SIOR**  
(812) 890-1768 | [Jared@SqFtCommercial.com](mailto:Jared@SqFtCommercial.com)



# 680 PRECISION CT. MIAMISBURG, OH

## PROPERTY PHOTOS



INFO@SQFTCOMMERCIAL.COM | (513) 843-1600 | [SQFTCOMMERCIAL.COM](http://SQFTCOMMERCIAL.COM)

**Rod MacEachen**  
(513) 675-5764 | [Rod@SqFtCommercial.com](mailto:Rod@SqFtCommercial.com)

**Roddy MacEachen, SIOR**  
(513) 739-3985 | [Roddy@SqFtCommercial.com](mailto:Roddy@SqFtCommercial.com)

**Jared Wagoner, SIOR**  
(812) 890-1768 | [Jared@SqFtCommercial.com](mailto:Jared@SqFtCommercial.com)

**Amy Castaneda**  
(503) 310-9768 | [Amy@SqFtCommercial.com](mailto:Amy@SqFtCommercial.com)

**Sarah Kern**  
(513) 426-4864 | [Sarah@SqFtCommercial.com](mailto:Sarah@SqFtCommercial.com)

